



Busy Bee

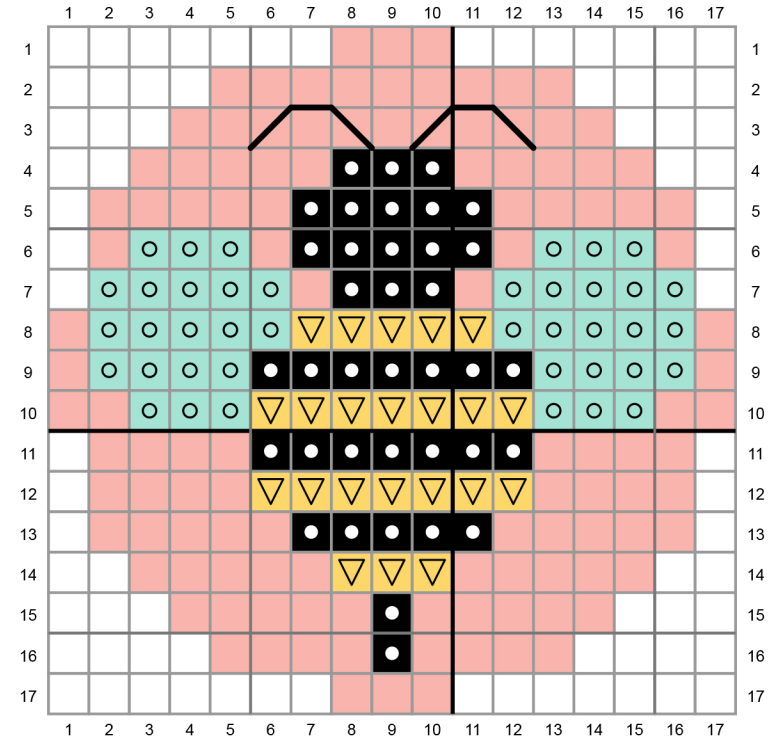
Pattern for Embroidery Hoop Lawn Cuts
by Chari Moss



created for lawn fawn by chari moss

Card Supplies Used:

- Embroidery Hoop LF3093
- Hive Five LF2927
- Hive Five Lawn Cuts LF2928
- Apple-solutely Awesome LF2930
- Large Stitched Rectangle Stackables LF767
- Scalloped Rectangle Stackables LF997
- Spiffy Speckles - Ripe Banana LF1863
- What's Sewing On? Petite Paper Pack LF3118
- Mermaid Cardstock LF1121
- Narwhal Cardstock LF1272
- Ballet Slippers Cardstock LF1444
- Guava Cardstock LF1117



- No stitch
- DMC 310 - Black - Backstitch with 6 strands
- DMC 743 - Medium Yellow
- DMC 964 - Light Seagreen
- DMC 761 or Ballet Slippers Cardstock