



## Fall Foliage

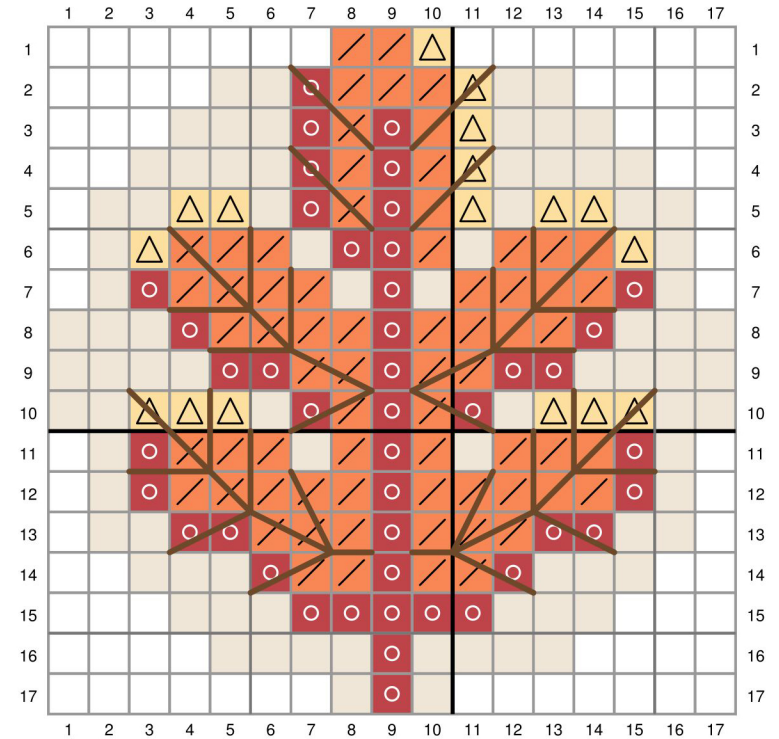
Pattern for Embroidery Hoop Lawn Cuts  
by Chari Moss



created for lawn fawn by chari moss

### Card Supplies Used:

Embroidery Hoop LF3093  
 Jump for Joy LF1212  
 Jump for Joy Lawn Cuts LF1213  
 Simply Fall Sentiments LF2934  
 Large Stitched Rectangle Stackables LF767  
 Vanilla Malt Cardstock LF1576  
 Narwhal Cardstock LF1272  
 Knock On Wood - Coffee Table paper LF1512  
 Favorite Flannel - Hot Toddy paper LF3198  
 Jet Black Premium Ink LF1302  
 Walnut Ink LF867  
 Star Dust Stickles LF1007



-  No stitch
-  DMC 3328 - Dark Salmon
-  DMC 722 - Light Orange Spice
-  DMC 3855 - Light Autumn Gold
-  DMC 3862 - Dark Mocha Beige - Backstitch with 3 strands
-  DMC 3866 - Ultra Very Light Mocha or Vanilla Malt cardstock