



## Shell Yeah

Pattern for Embroidery Hoop Lawn Cuts  
by Chari Moss



created for lawn fawn by chari moss

### Card Supplies Used:

Embroidery Hoop LF3093

How You Bean? Seashell Add-On LF3169

Outside In Stitched Rectangle Stackables LF1442

Large Wreath LF1497

Christmas Garland LF2688

Speckled Eggshell Cardstock LF2086

Mermaid Cardstock LF1121

Kraft Cardstock LF1747

Apricot Cardstock LF1843

Textured Canvas Cardstock - Aqua LF2840

Metallic Cardstock - Gold LF2456

Peachy Keen Ink Pad LF1390

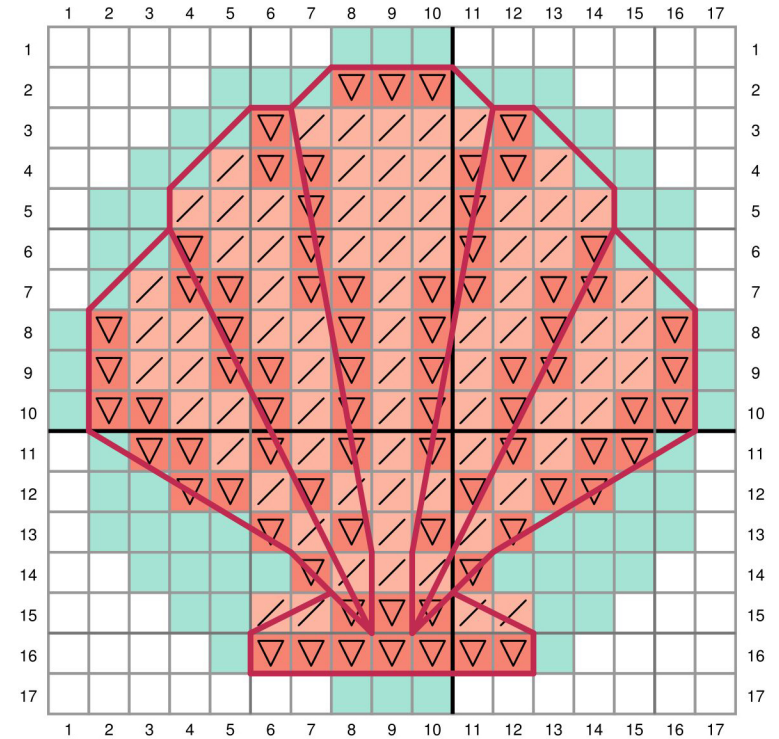
Embossing Ink Pad LF1811

White Embossing Powder LF1537

Gansai Tambi Starry Colors LF1850

Star Dust Stickles LF1007

Natural Jute Twine



-  No stitch
-  DMC 353 - Peach
-  DMC 352 - Light Coral
-  DMC 3832 - Medium Raspberry - Backstitch with 4 strands
-  DMC 964 - Light Seagreen or Mermaid cardstock